



a Siebe company

Installation of the Barber-Colman Electric Governor on the Cat 3306B-G Drive Diesel, having Cat Mechanical Governor option 2W7699 and Stop Lever 2W9161. The Engine Flywheel has 156 teeth.

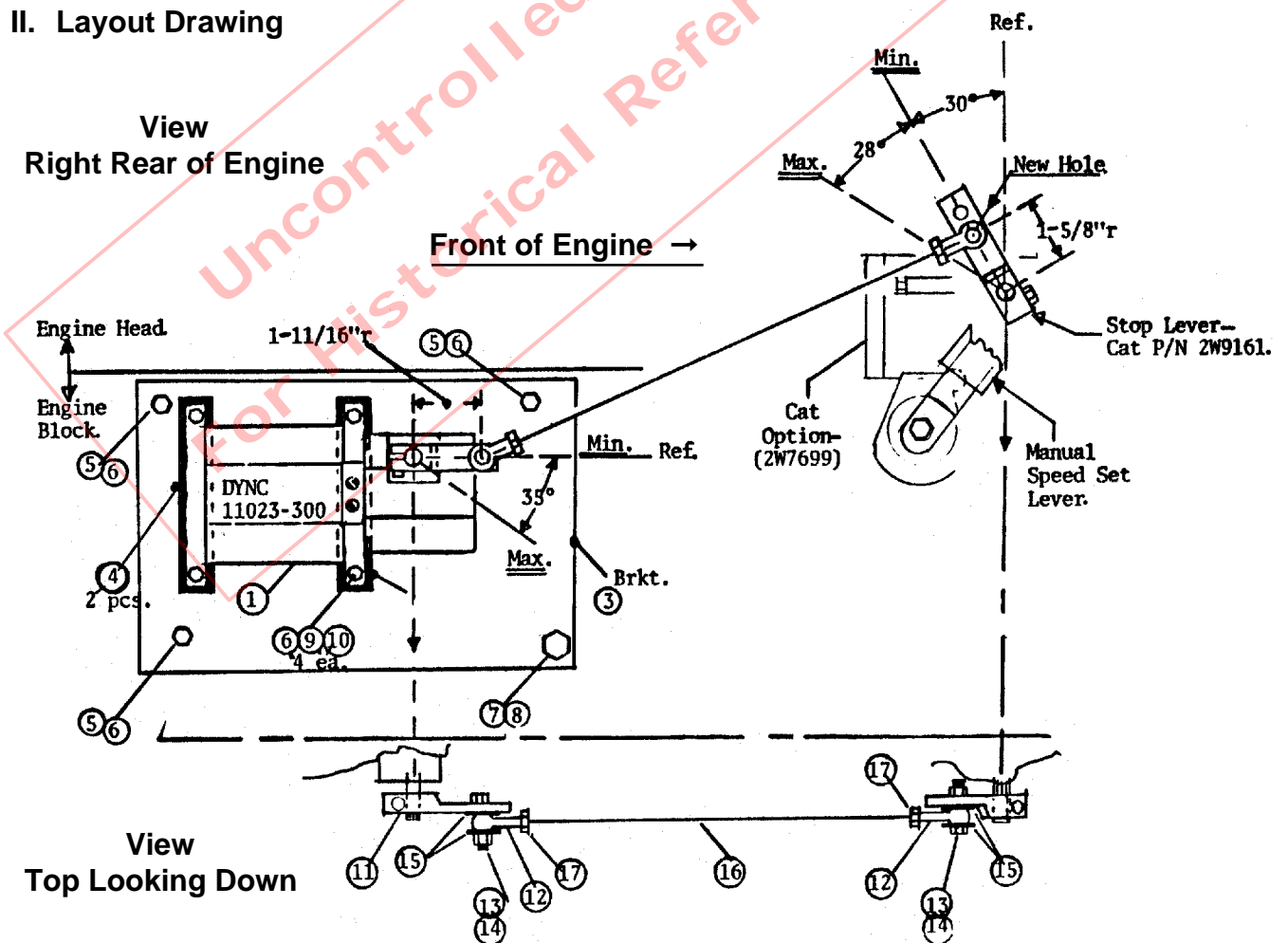
The governor linkage connects to the pump stop lever. Install the actuator on the bracket before mounting the bracket to the engine block. Drill a 1/4" hole in the stop lever at 1-5/8" radius as shown.

Read all instructions and review the layout drawing before attempting this installation.

I. Linkage Instructions

- a. Set mechanical throttle 10% above normal operating speed.
- b. Operate stop lever by hand until engine stops. Mark lever position. Note: Use this lever position when connecting the linkage.
- c. The stop lever needs to move toward sufficient fuel for 110% of load.

II. Layout Drawing



III. Parts List

A. Table 1. Governor Assembly

Specify voltage when ordering Items 1 and 2

Item	Description	Barber-Colman Part Number	Qty.
1	Governor actuator	DYNC-11023-300	1
2	Controller	DYN1-10654	1

B. Table 2. Installation Kit

B-C Part Number DYNK-10237

Item	Description	Barber-Colman Part Number	Qty.
3	Actuator mounting bracket	DYNK-68-18	1
4	Spacer bars (Install between actuator & bracket)	DYNK-68-19	2
5	Bracket Screws 5/16" - 18 x 1-1/2" Hex	BYRF-1354	3
6	Lock washers 5/16"	CYRD-559	7
7	Bracket screw 5/8"-11 x 1-1/4 Hex	BYRF-1392	1
8	Lock washer 5/8"	CYRD-564	1
9	Actuator Mtg. Screw (M8x90 mm socket hd)	S4-79	4
10	Nuts M8 Hex.	N1-19	4
11	Actuator lever	DYNC-182-2	1
12	Rod end bearings 1/4 - 28	DYNZ-47-1	2
13	Rod end brg. screws 1/4-28x1-1/4" Hex	BYRF-3050	2
14	Nuts 1/4 - 28 Hex	DYRF-293	2
15	Flat washers 1/4"	CYRD-548	4
16	Linkage rod 1/4-28 x 10-1/2" long	GYRF-42-12	1
17	Linkage rod jam nuts 1/4-28 Hex.	DYRF-293	2
18	Magnetic pickup	DYNT-10100	1
19	Magnetic pickup cable (6 Ft.)	DYNK-44-1	1

C. Table 3. Optional Parts

Item	Description	Barber-Colman Part Number	Qty.
20	Remote speed potentiometer	DYNS-10000	1
21	3-Wire shielded cable	E26-22	*
22	Twisted 14 ga. wire cable (6 ft.)	DYNK-63-3	2
23	Toggle switch (15A)	CYZP-11-1	1

NOTE

Barber-Colman believes that all information provided herein is correct and reliable and reserves the right to update at any time. Barber-Colman does not assume any responsibility for its use unless otherwise expressly undertaken.

CAUTION

As a safety measure, the engine should be equipped with an independent overspeed shutdown device in the event of failure which may render the governor inoperative.

Barber-Colman Company

AEROSPACE & POWER CONTROLS DIVISION

DYNA Product Group

1354 Clifford Avenue
P.O. Box 2940
Loves Park, IL U.S.A. 61132-2940

Phone: (815) 637-3000
Fax: (815) 877-0150

In Europe contact: Barber-Colman GmbH
Am neuen Rheinhafen 4, D-6720 Speyer, West Germany
Tel: 06232-1203, Fax: 06232-12155, Telex: 467 627

In Japan contact: Ranco Japan Ltd.
Shiozaki Bldg. 7-1, 2-chome, Hirakawa-Cho, Chiyoda-Ku
Tokyo 102, Japan
Tel: 3261-4293, Fax: 3264-4691, Telex: 0232-2087